

CREATIVA MARBLE SERIES

Product code - FL EFFECT

ICA
ITALIAN WOOD FINISHES
CREATIVA
SPECIAL EFFECTS

PRODUCT FEATURES



Marble effect



Multiple variants available



Easy to apply



High Coverage

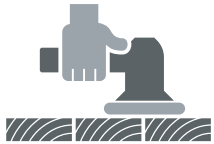


Superior Aesthetics



High Product performance

CREATIVA MARBLE SERIES MARBLE EFFECT APPLICATION PROCESS



STEP 1

Sand the wooden surface along the grains with P150-P180-P220-P320 sandpaper. Remove all dust and wooden particles with compressed air.

STEP 2

Apply the 1st coat of filler/base coat
FP288 + C268 + D1015 (100:30:50)
After 4-6 hours of drying, sand the 1st coat of base with P220 sandpaper

STEP 3

Apply the 2nd coat of base white filler
After 8-10 hours of drying, sand the 2nd coat of base with P320-P400 sandpaper

STEP 4

Apply one coat of PU pigmented matt topcoat
After 4-6 hours of drying, sand the applied coat with P320-P400 sandpaper

STEP 5

Apply the Marble Filaments FL series
FL - ready to use product
Drying time is 2 to 3hrs

STEP 6

Apply topcoat Clear finish (Acrylic PU)
LAC367 + C200 + D1079 (100:40:50) OR
OAC360G20 + C200 + D1015 (100:7:50)

Note -

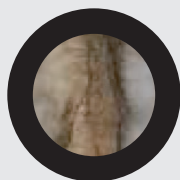
1. Refer the product codes and mixing ratios mentioned on container.
2. For better build up apply two coats of acrylic clear topcoat
3. Filament is Mono component pigmented paint, which leaves from the spray gun as a series of fine threads, giving an irregular network resembling marble.
4. Filament is available in the following colors: FL10 WHITE, FL11 RED, FL12 BLACK, FL13 CHROME YELLOW, FL14 GREEN, FL15 BLUE, FL16 OXIDE YELLOW, FL17 OXIDE BROWN, FL18 LIGHT PINK, FL19 GREY
5. Effects can be obtained by choosing contrasting base and FL colors, or by applying several
6. Different FL colors onto a contrasting PU pigmented base for multi-colored effect.
7. Always apply acrylic topcoat for better transparency and aesthetic appearance.

CREATIVA MARBLE SERIES

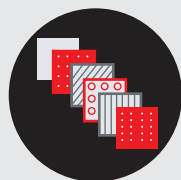
Product code - NEW MARBLE EFFECT



PRODUCT FEATURES



Marble effect



Multiple variants available



Easy to apply



High Coverage

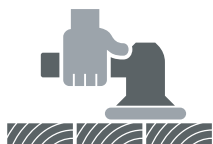


Superior Aesthetics



High Product performance

CREATIVA MARBLE SERIES NEW MARBLE EFFECT APPLICATION PROCESS



STEP 1

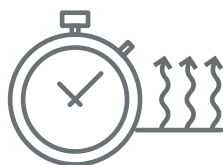
Sand the wooden surface along the grains with P150-P180-P220-P320 sandpaper. Remove all dust and wooden particles with compressed air.

STEP 2

Apply the 1st coat of filler/base coat
After 4-6 hours of drying, sand the 1st coat of base with P220 sandpaper

STEP 3

Apply the 2nd coat of base white filler
After 8-10 hours of drying, sand the 2nd coat of base with P320-P400 sandpaper



STEP 4

Apply one coat of PU pigmented matt topcoat
After 4-6 hours of drying, sand the applied coat with P320-P400 sandpaper

STEP 5

Apply Patina + CNA STAIN (90: 10) as a straight line in spots.
Then apply immediately, wet on wet another shade of CNA stain in the same way.
Drift the material by spraying the acetone so that stain shades will merge to have random marble finish, Dry time -4-6 hours



STEP 6

Apply topcoat Clear finish (Acrylic PU)
LAC367 + C200 + D1079 (100:40:50) OR
OAC360G20 + C200 + D1015 (100:7:50)

Note -

1. For better build up use two coats of acrylic clear high gloss topcoat
2. Sixteen CNA stains are available as CNA18 (WENGE'), CNA31 (RED), CNA39 (LIGHT WALNUT), CNA40 (DARK WALNUT), CNA41 (ANTIQUE WALNUT), CNA48 (APRICOT), CNA51 (YELLOW), CNA70 (BLACK), CNA71 (LEMON YELLOW), CNA72 (SCARLET), CNA73 (LIGHT WALNUT), CNA74 (LIGHT MAHOGANY), CNA75 (RED BROWN), CNA76 (LIGHT GREEN), CNA77 (TURQUOISE), CNA848 (WHITE).
3. Effects can be obtained by choosing contrasting base and stain colors, or by applying several different CNA stain colors onto a contrasting PU pigmented base for multi-colored effect
4. Always apply acrylic topcoat for better transparency and aesthetic appearance.

IMPORTANT NOTE -

- 1) All mixing ratios are given on weight basis.
- 2) Stir the material well before use thoroughly and mixed with the hardener and thinner/water in the specified mixing ratio.
- 3) If required, apply ICA Wood Stains by wiping ragging on sanded wooden surface and allow it for 30-60 minutes of drying then apply subsequent coat.
- 4) Use only ICA basecoat as sealer coat. Do not use any other product/material for sealing purpose.
- 5) Do not add the hardener and thinner/water together to the product, add one after the other and mix well before applying. The base and hardener must be consumed within 7 days of opening the containers.
- 6) The containers should be tightly closed after use as the contents are sensitive to moisture.
- 7) For spray application of ICA coating use HVLP spray gun having Nozzle size 1.8 – 2.2 mm and keep Air Pressure 36-43psi for better application and results.
- 8) Recoat period is quoted for 20°C - 35°C and 65% relative humidity, these may vary under different conditions.
- 9) Use only ICA basecoat for as sealer/filler coat. Do not use any other product for sealing/filling purpose.
- 10) Do not mix Matt and Glossy finishes for different sheen level.
- 11) Make sure that too many air bubbles are not formed in the product while mixing
- 12) For optimum performance, product must be applied at a temp between 20°C and 35°C and humidity not above 65%.
- 13) After application of ICA stain by spray or wiping wait for 30 -60 minutes for the application of subsequent coat.
- 14) Buffing of high gloss topcoat can be done after 36 - 48 hrs. of application of last coat.
- 15) For better result use Orbital Machines for sanding & Buffing, Rotation Per Minute (RPM) should not exceed more than 1200

SAFETY INFORMATION -

- 1) Keep away from heat, sparks, and naked flames; do not smoke or use matches or lighters.
- 2) Open containers with caution as they may be pressurized. Do not eat, drink, or smoke during use. Avoid leakage of the product into the environment.
- 3) Store the product at ambient conditions in well ventilated locations and away from source of ignition and fire.
- 4) Use protective equipment like gloves, safety goggles/glasses, face mask, shoes while handling the paint.
- 5) Avoid eye and skin contact. In both cases wash with soap and plenty of water.
- 6) Do not inhale or ingest. In case of inhalation move to fresh air and seek medical attention if symptoms persist in both cases.
- 7) Do not dispose in any drain or land filling. Work in well ventilated areas.
- 8) Flammable.

DECLARATION -

Always verify the suitability of the product for the job to be done before application. We cannot accept responsibility for the outcome. The information contained in this data sheet, as well as any verbal information, is given to the best of our knowledge. We do not accept responsibility for obsolete or incorrect information. Please feel free to contact us to request the latest edition.